

### Contact

**Health Care Division** Internal medicine/orthopedics/psychiatry consultations, health checkups, etc.

| Toyonaka Branch                     | Suita Branch                        | Minoh Branch                        |
|-------------------------------------|-------------------------------------|-------------------------------------|
| Tel: 06-6850-6038 Fax: 06-6850-6040 | Tel: 06-6879-8970 Fax: 06-6879-4088 | Tel: 072-730-5151 Fax: 072-730-5153 |

**Counseling and Support Division** Consultation and support for various problems and concerns

| Counseling Room for Students | Accessibility Services Office                                      |
|------------------------------|--|
| Tel: 06-6850-6014            | Tel: 06-6850-6107 Mail: campuslifekenkou-acss@office.osaka-u.ac.jp |

|   |   |                                |   |  |                                |
|---|---|--------------------------------|---|--|--------------------------------|
| 3F, Student Services & Union, Osaka University Student Service Center, Toyonaka | 2F, Suita Educational Training Center, Cybermedia Center, Suita | 1F, Research and Education Hub | 3F, Student Services & Union, Osaka University Student Service Center, Toyonaka | 1F, Intercultural Collaboration (IC) Hall, Suita | 1F, Research and Education Hub |
|---|---|--------------------------------|---|--|--------------------------------|

| Counseling Room for Faculty and Staff                         | Peer Consultation   | General Consultation |
|---|---|----------------------|
| Tel: 06-6850-6014 Mail: kyousyokuin-soudan@hacc.osaka-u.ac.jp | Tel: 06-6850-6651 Mail: campuslifekenkou-peers@office.osaka-u.ac.jp |                      |

|   |   |   |   |
|---|---|---|---|
| 3F, Student Services & Union, Osaka University Student Service Center, Toyonaka | 2F, Suita Educational Training Center, Cybermedia Center, Suita | 3F, Student Services & Union, Osaka University Student Service Center, Toyonaka | 2F, Suita Educational Training Center, Cybermedia Center, Suita |
|---|---|---|---|

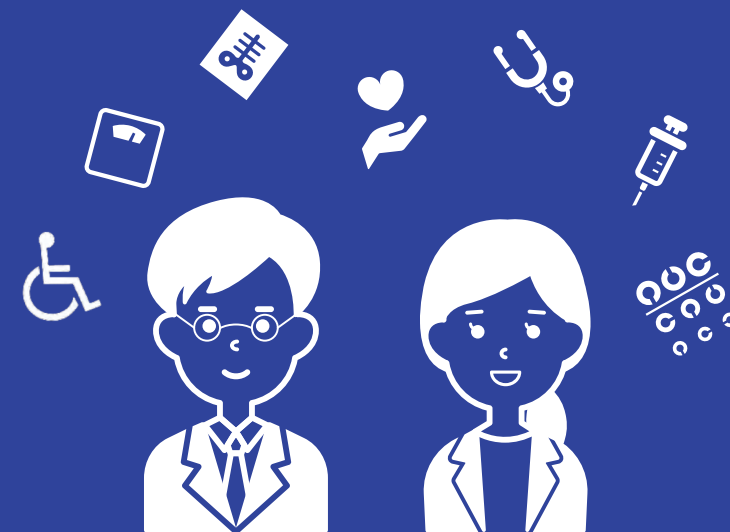
Please come to the Health Care Division counter on any OU campus. Tel: 06-6850-8322

**Harassment Counseling Offices** (integrated into HaCC in November 2021) \*If you wish to receive counseling, please call and schedule an appointment.

| Toyonaka 1        | Toyonaka 2        | Suita 1 & 2                    | Minoh             | More Information |
|-------------------|-------------------|--------------------------------|-------------------|------------------|
| Tel: 06-6850-5029 | Tel: 06-6850-6006 | Tel: 06-6879-6981 06-6879-6982 | Tel: 072-730-5112 |                  |

Follow @hacc\_osaka on Twitter to find out what's new!!

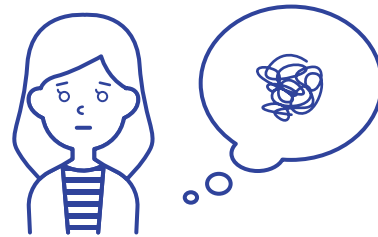
# Health and Counseling Center (HaCC)



HaCC will be there for you to help you with your problems and concerns. For further details, see the inside page. ▶▶▶▶▶

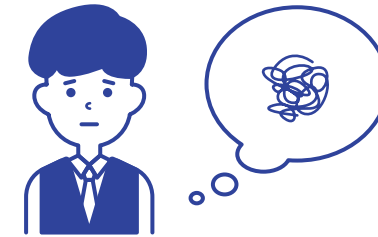
# What HaCC can do for you

## Counseling Room for Students



We offer a wide range of consultations, including concerns about studying, worries about relationships, and your personality. Qualified counselors will listen to you carefully and help you solve your problems. This service is available to all Osaka University students. Faculty, staff, and family members who are having trouble dealing with students can also use this service. Counseling in English is also available.

## Harassment Counseling Offices



At Harassment Counseling Offices, you can receive advice from counselors about issues such as sexual harassment, maternity/child-rearing harassment, academic harassment, power harassment, and more. The counselors are here to protect your reputation and privacy, so you can breathe easy when making use of the services at Harassment Counseling Offices.

## Health Checkups



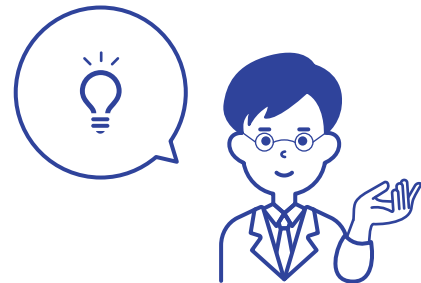
Various health checkups are conducted for students and staff throughout the year. All eligible students including freshmen are required to undergo the annual health checkup for students in April. We also conduct annual health checkups for staff and employees.

## Counseling Room for Faculty and Staff



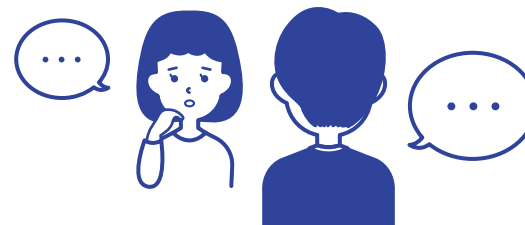
We provide a place for faculty and staff members who have physical or mental problems to consult with us about anything. Depending on the details of your consultation, we may refer you to internal/external consultation support organizations or medical institutions as appropriate.

## Accessibility Services Office



For students with disabilities or illnesses who are having trouble with their studies or career paths, we provide advice and information. Your coordinator will interview you and work with you to determine the best way to support you. We also provide reasonable accommodations at the university in coordination with the school or graduate school to which you belong.

## Peer Consultation



About issues related to student life, graduate students majoring in clinical psychology at the Graduate School of Human Sciences, Osaka University, will be available to talk with you as "peer advisors" from the same generation as you. We also hold events that focus on group activities, so please feel free to come and join us.

## About consultations



Doctors in internal medicine, orthopedics, and psychiatry are available for consultation and examination. If necessary, we will refer you to an appropriate medical institution. We also offer outpatient services for smoking cessation and for women to support the mental and physical health of students, faculty, and staff.

## General Consultation



If you would like to consult with someone, but are not sure which office to go to, or if you have any questions about SOGI (Sexual Orientation and Gender Identity), please contact us. This service is available to all students, faculty, and staff members. If necessary, we will refer you to an appropriate consultation support service or medical institution on or off campus.